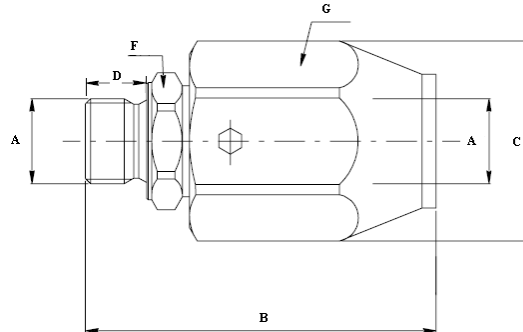


GIUNTO GIREVOLE IN LINEA



CODICE	A
2260002004	1/4
2260002006	3/8
2260002008	1/2
2260002012	3/4
2260002016	1"
2260002020	1"1/4
2260002024	1"1/2
2260002032	2"



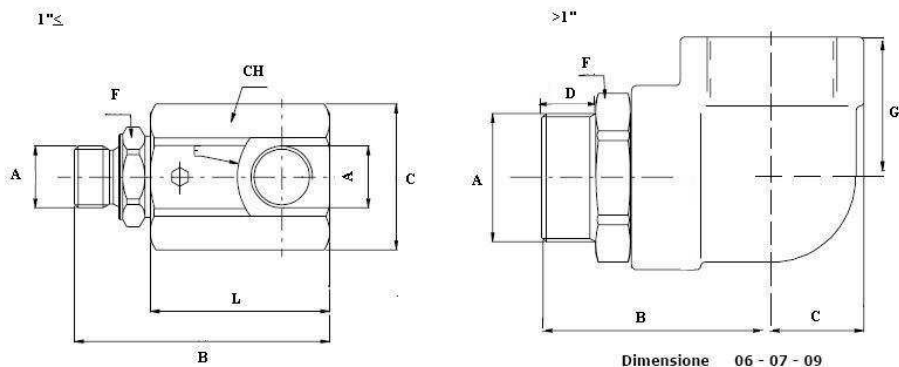
DIMENSIONI

A	B		C		D		E		F		G		MAX PRESSURE IN ROTATION PRESSIONE MASSIMA IN ROTAZIONE		STATIC MAX PRESSURE PRESSIONE MASSIMA STATICA	
	mm	inch	mm	inch	mm	inch	mm	inch	mm	inch	mm	inch	bar	psi	bar	psi
1/4"	61	2,40	33	1,30	11	0,43	6,5	0,25	ES19	0,74	ES30	1,20	200	2900	400	5800
3/8"	66	2,60	37	1,85	14	0,55	9,0	0,35	ES24	0,94	ES34	1,34	200	2900	400	5800
1/2"	70	2,75	42	1,65	15	0,59	12,0	0,47	ES27	1,06	ES36	1,41	150	2175	300	4350
3/4"	79	3,10	50	1,90	19	0,75	16,0	0,63	ES34	1,34	ES45	1,77	150	2175	300	4350
1"	90	3,50	ø55	2,16	21	0,82	20,0	0,78	ES41	1,60	CH50	1,97	100	1450	300	4350
1".1/4"	101	3,90	ø60	2,36	24	0,94	28,0	1,10	ES50	1,96	CH55	2,16	100	1450	300	4350
1.1/2"	110	4,30	ø70	2,75	25	0,98	34,0	1,34	ES55	2,10	CH65	2,56	80	1160	300	4350
2"	118	4,60	ø85	3,34	27	1,06	44,0	1,73	ES65	2,55	CH75	2,56	50	725	250	3625
2.1/2"	138	5,40	ø98	3,85	30	1,18	58,0	2,28	CH80	3,15	CH90	2,95	50	725	250	3625

GIUNTO GIREVOLE A 90°



CODICE	A
2260004004	1/4
2260004006	3/8
2260004008	1/2
2260004012	3/4
2260004016	1"
2260004020	1"1/4
2260004024	1"1/2
2260004032	2"



DIMENSIONI

A	B		C		D		E		F		G		CH		MAX PRESSURE IN ROTATION PRESSIONE MASSIMA IN ROTAZIONE		STATIC MAX PRESSURE PRESSIONE MASSIMA STATICA	
	mm	inch	mm	inch	mm	inch	mm	inch	mm	inch	mm	inch	mm	inch	bar	psi	bar	psi
1/4"	69	2,71	30,5	1,20	11	0,43	6,5	0,25	ES19	0,75	58,0	2,30	ES30	1,18	200	2900	400	5800
3/8"	78	3,10	41,5	1,63	14	0,55	9,0	0,35	ES24	0,94	63,0	2,50	ES36	1,42	200	2900	400	5800
1/2"	86	3,38	44	1,73	15	0,60	12,0	0,47	ES27	1,06	68,5	2,70	ES38	1,50	150	2175	300	4350
3/4"	99	3,90	58	2,30	19	0,75	16,0	0,63	ES34	1,34	79,0	3,11	ES50	1,97	150	2175	300	4350
1"	113	4,45	ø60,0	2,36	21	0,82	20,0	0,78	ES41	1,61	90,0	3,54	ø60	2,36	100	1450	300	4350
1"1/4"	92	3,62	ø31,5	1,24	24	0,94	28,0	1,10	ES50	1,97	56,5	2,22			100	1450	300	4350
1.1/2"	104	4,10	38	1,50	25	0,98	34,0	1,34	ES55	2,16	62,0	2,44			80	1160	300	4350
2"	111	4,37	45	1,77	27	1,06	44,0	1,73	ES65	2,56	67,0	2,63			50	725	250	3625
2.1/2"	135	5,31	55	2,16	30	1,18	58,0	2,28	CH80	3,15	83,0	3,26			50	725	250	3625